

Zip Code 78753

Residential Statistics



September 2021

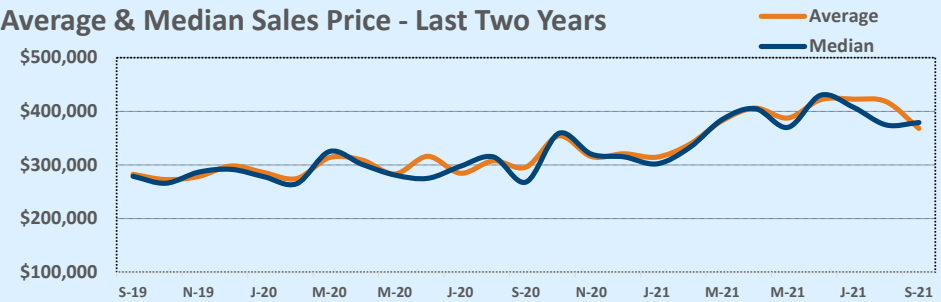
Listings	This Month			Year-to-Date		
	Sep 2021	Sep 2020	Change	2021	2020	Change
Single Family Sales	21	21	--	210	177	+18.6%
Condo/TH Sales	7	5	+40.0%	57	35	+62.9%
Total Sales	28	26	+7.7%	267	212	+25.9%
New Homes Only	--	--	--	3	2	+50.0%
Resale Only	28	26	+7.7%	264	210	+25.7%
Sales Volume	\$10,302,811	\$7,693,450	+33.9%	\$105,289,161	\$62,658,384	+68.0%
New Listings	--	--	--	--	--	--
Pending	18	25	-28.0%	23	219	-89.5%
Withdrawn	4	2	+100.0%	20	12	+66.7%
Expired	--	--	--	5	3	+66.7%
Months of Inventory	1.0	0.8	+34.6%	N/A	N/A	--

Price Range	This Month			Year-to-Date		
	New	Sales	DOM	New	Sales	DOM
\$149,999 or under	--	--	--	--	1	56
\$150,000- \$199,999	--	--	--	5	3	21
\$200,000- \$249,999	--	2	3	21	14	14
\$250,000- \$299,999	4	4	6	48	38	9
\$300,000- \$349,999	6	6	24	55	38	9
\$350,000- \$399,999	4	6	18	66	49	13
\$400,000- \$449,999	6	5	23	47	44	10
\$450,000- \$499,999	9	3	6	47	40	9
\$500,000- \$549,999	1	2	6	16	20	7
\$550,000- \$599,999	2	--	--	12	6	5
\$600,000- \$699,999	5	--	--	12	12	8
\$700,000- \$799,999	1	--	--	1	--	--
\$800,000- \$899,999	1	--	--	2	2	110
\$900,000- \$999,999	--	--	--	--	--	--
\$1M - \$1.99M	--	--	--	--	--	--
\$2M - \$2.99M	--	--	--	--	--	--
\$3M+	--	--	--	--	--	--
Totals	39	28	15	332	267	11

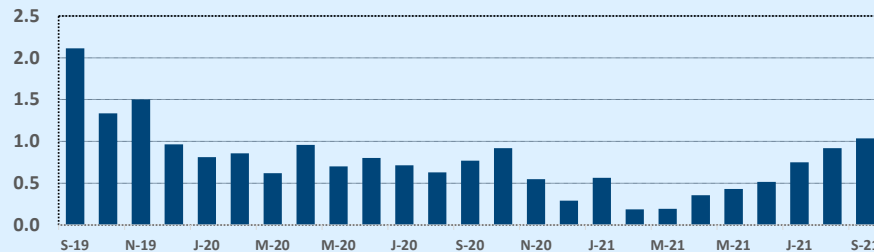
Average	This Month			Year-to-Date		
	Sep 2021	Sep 2020	Change	2021	2020	Change
List Price	\$365,836	\$300,421	+21.8%	\$366,358	\$297,046	+23.3%
List Price/SqFt	\$285	\$188	+51.9%	\$246	\$190	+29.4%
Sold Price	\$367,958	\$295,902	+24.4%	\$394,341	\$295,558	+33.4%
Sold Price/SqFt	\$287	\$185	+55.6%	\$265	\$190	+39.8%
Sold Price / Orig LP	100.9%	97.3%	+3.6%	108.5%	98.5%	+10.1%
Days on Market	15	13	+20.2%	11	22	-49.3%

Median	This Month			Year-to-Date		
	Sep 2021	Sep 2020	Change	2021	2020	Change
List Price	\$380,000	\$284,495	+33.6%	\$359,000	\$292,400	+22.8%
List Price/SqFt	\$267	\$195	+36.8%	\$241	\$194	+24.4%
Sold Price	\$379,056	\$268,000	+41.4%	\$389,000	\$286,500	+35.8%
Sold Price/SqFt	\$274	\$193	+42.0%	\$259	\$194	+33.5%
Sold Price / Orig LP	102.0%	99.0%	+3.0%	107.0%	100.0%	+7.0%
Days on Market	8	6	+45.5%	5	7	-23.1%

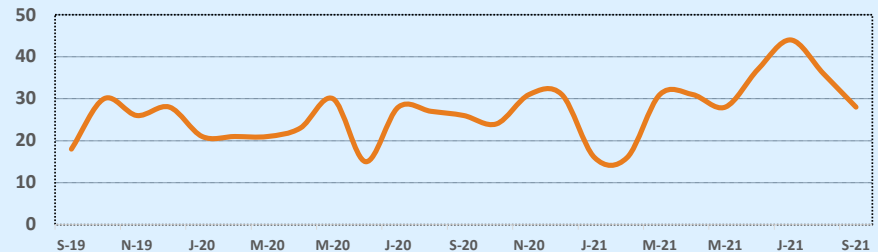
Average & Median Sales Price - Last Two Years



Months of Inventory - Last Two Years



Number of Sales - Last Two Years



Based on information from the Austin Board of REALTORS® (alternatively, from ACTRIS). Neither the Board nor ACTRIS guarantees or is in any way responsible for its accuracy. The Austin Board of REALTORS®, ACTRIS and their affiliates provide the MLS and all content therein "AS IS" and without any warranty, express or implied. Data maintained by the Board or ACTRIS may not reflect all real estate activity in the market.